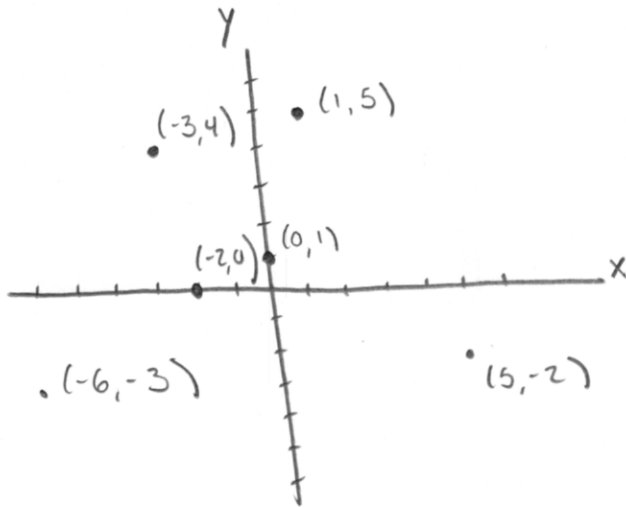
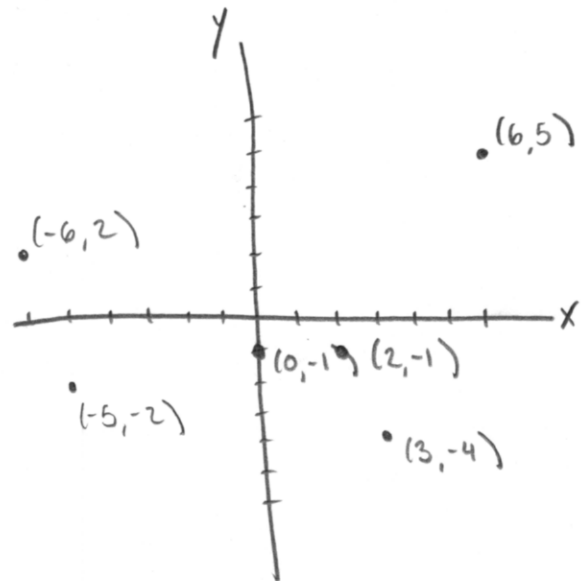


11/30/2014

9.10.11.

AS THE VOLUME OF A GAS TANK INCREASES, THE COST TO FILL THE TANK WITH GAS ALSO INCREASES.

13.

AFTER JUMPING THE SKYDIVER'S SPEED INCREASES UNTIL SHE REACHES "TERMINAL VELOCITY", AT WHICH POINT HER SPEED LEVELS OFF. ONCE SHE PULLS THE CORD, HER SPEED DROPS SIGNIFICANTLY. SPEED REACHES 0 WHEN SHE LANDS. (ASSUMING ALL GOES TO PLAN!)

16.

AS THE RATE OF PEDALING INCREASES, THE SPEED OF THE BICYCLE INCREASES.

17.

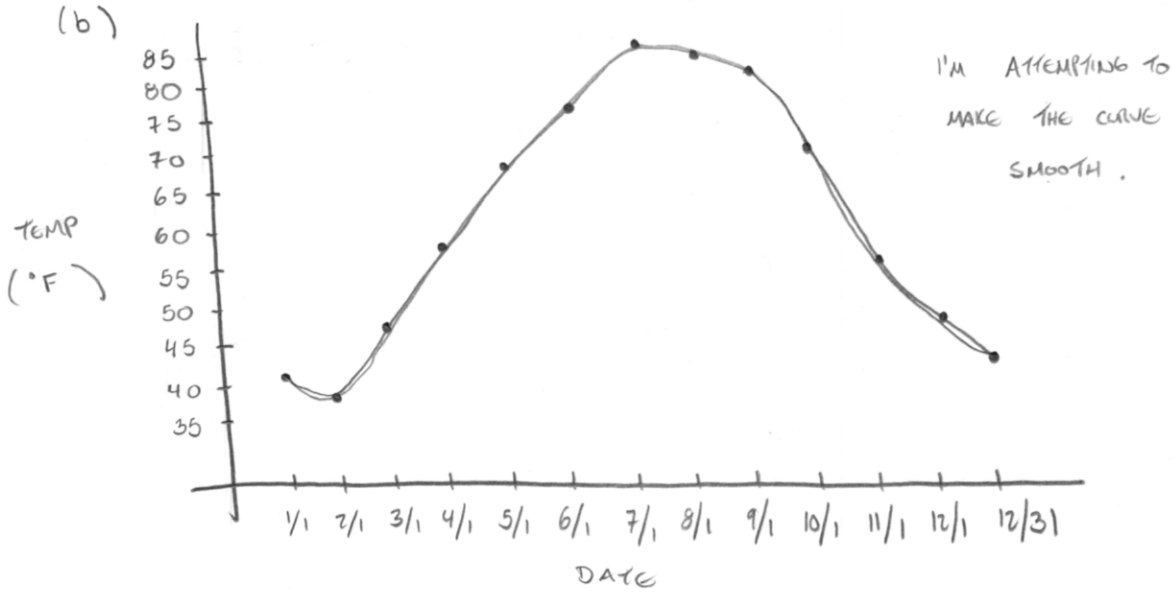
AS THE GAS MILEAGE INCREASES, THE COST OF DRIVING 500 MI DECREASES.

23. (a) INDEPENDENT VAR: DATE

DEPENDENT VAR: AVE HIGH TEMP

DOMAIN: 1/1 TO 12/31

RANGE: 38°F TO 85°F



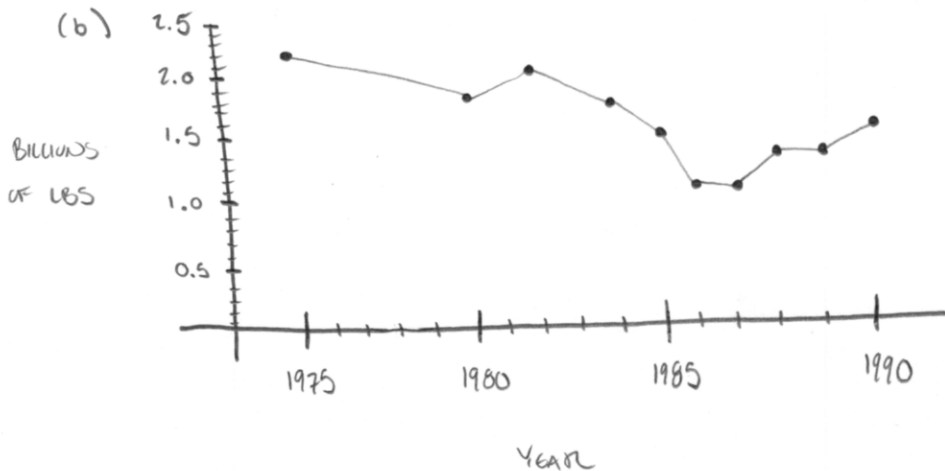
(c) TEMPERATURES REACH A LOW IN FEB. THEN INCREASE TO A HIGH IN JULY BEFORE FALLING BACK.

25. (a) IND. VAR: YEAR

DOMAIN: 1975-1990

DEP. VAR: TOBACCO PRODUCED

RANGE: 1.2 BILL - 2.2 BILL

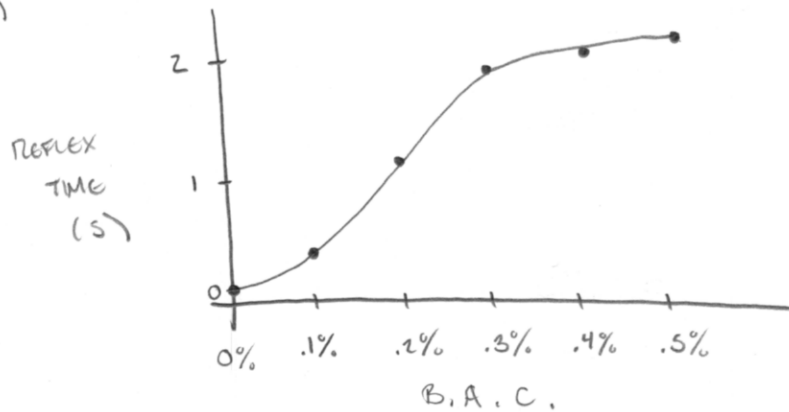


(c) GENERALLY, TOBACCO PRODUCTION DECREASED UNTIL 1986, WHEN IT LEVELLED OFF & THEN BEGAN TO INCREASE.

29. (a) DOMAIN: BLOOD ALC. CONSTANT 0% - 0.5%

RANGE: REFLEX TIME 0s - 2s

(b)



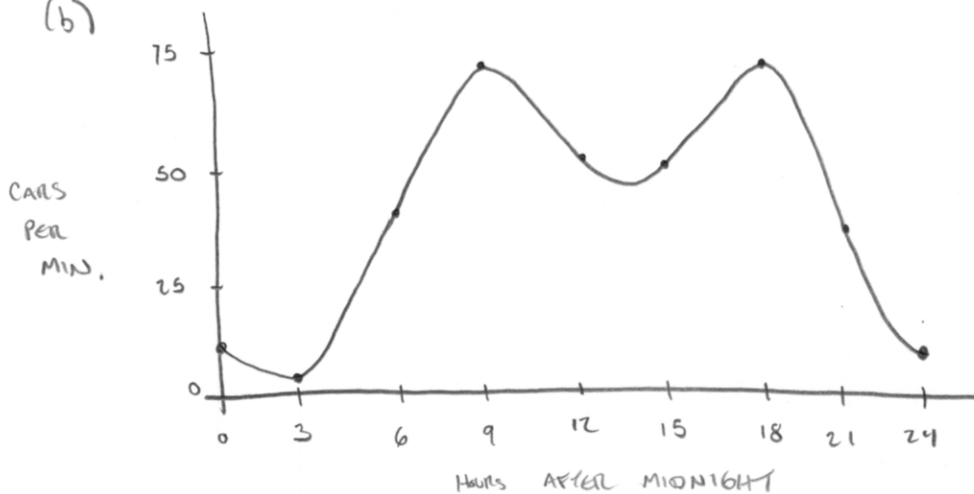
AS BAC INCREASES,
REFLEX TIME INCREASES.
I JUST FIGURE THAT
ONES REFLEXES WILL NOT
INCREASE BEYOND 2 SEC.
THOUGH I COULD BE WRONG.

(c) PROBABLY NOT VALID AT ALL. I'M JUST GUESSING!

31. (a) DOMAIN: HOURS AFTER MIDNIGHT 0-24

RANGE: CARS PER MINUTE 0-75

(b)

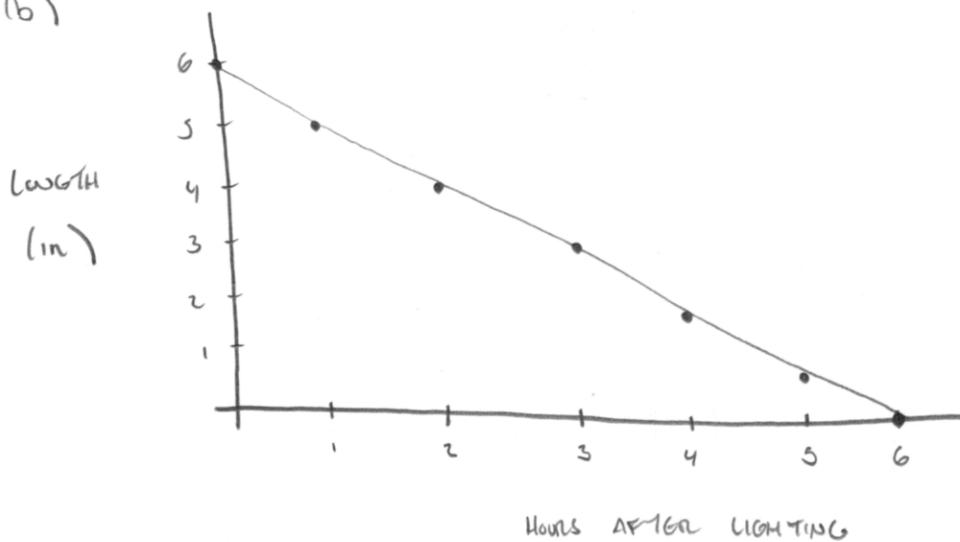


TRAFFIC IS LIGHT AT NIGHT
AND HEAVIER DURING THE
DAY, WITH PEAKS AT
MORNING & EVENING
RUSH HOUR.

(c) PROBABLY CLOSE TO TRUE FOR SOME INTERSECTIONS SOMEWHERE,

34. (a) DOMAIN 0 - 360 MIN
RANGE 0 - 6 IN.

(b)



A 6" CANDLE SHRINKS BY 1" EACH HOUR.

(c) IDK. I MADE IT UP!